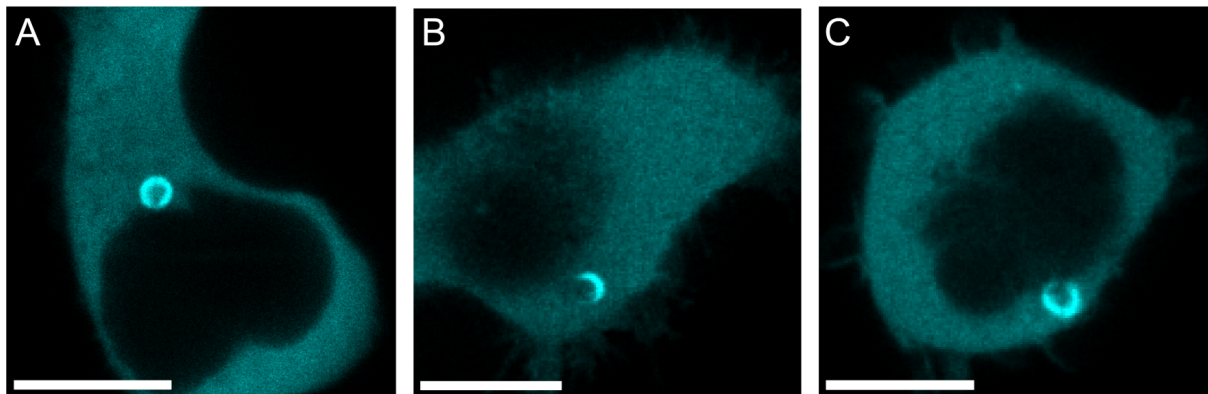


Supplementary Figure 1: Confocal images of three individual HEK293T cells transfected with ANXA2-GFP after PM puncture. All cells show complete ANXA2 ring-like structures surrounding the injury site at the cell periphery. The scale bars measure 10 μm .



Supplementary Figure 2: Confocal images of three individual HEK293T cells transfected with ANXA2-GFP after PM puncture. (A) An ANXA2 ring-like structure is observed near the nucleus. (B) A fraction of an ANXA2 ring is visualized. (C) An ANXA2 ring structure in close proximity to both the nucleus and the cell's periphery. The scale bars measure 10 μm .